

COMPLETE DENTURE WITH 2 OR 4 LOCATOR ATTACHMENTS

A Complete Denture with 2 or 4 Locator Attachments is an appliance that replaces all of the teeth in one jaw. It is not cemented in the mouth and can be taken out. Locator Attachments are connected to dental implants that are placed in the jawbone. The Locator Attachments connect the Complete Denture to the implants. Generally, 2 implants and attachments are used for a lower jaw Complete Denture, and 4 implants and attachments are used for an upper jaw Complete Denture.

Frequently Asked Questions

1. **What material is in a Complete Denture with 2 or 4 Locator Attachments?**

The base of a complete denture with locator attachments is made of pink acrylic. The teeth are made of tooth colored acrylic or porcelain which attach into the base. Locator attachments are plastic and the implants they attach to are titanium.

1. **What are the benefits of a Complete Denture with 2 or 4 Locator Attachments?**

Locator attachments greatly improve the retention and chewing ability of a complete denture. Patients who have a dry mouth and/or fragile tissue may have difficulty with retention and comfort of a traditional complete denture and benefit from locator attachments. Lip support is better compared to an implant retained fixed restoration. A removable appliance is more easily repaired. Oral hygiene is also easier.

1. **What are the risks of a Complete Denture with 2 or 4 Locator Attachments?**

Locator attachments wear out over time and need to be replaced. Denture acrylic covering the locator attachment may chip if it is thin due to a limited space in the mouth.

1. **What are the alternatives to a Complete Denture with 2 or 4 Locator Attachments?**

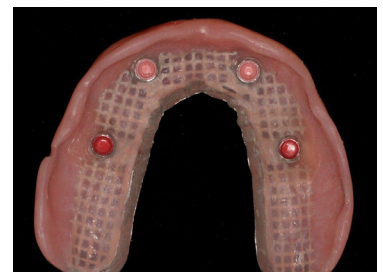
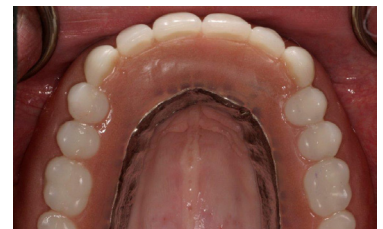
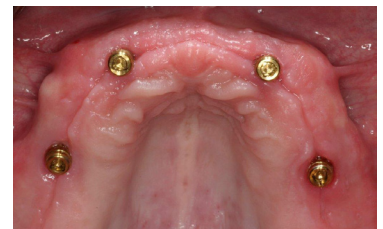
- A traditional complete denture
- A complete denture with a milled bar attachment
- A complete denture with locator attachments on a bar
- Crowns or bridges supported by dental implants
- Leave your mouth as it is

1. **How can an existing bite affect a Complete Denture with 2 or 4 Locator Attachments?**

Uneven or excessive bite forces may cause wear or fracture of the denture teeth, denture base or locator attachments. Unmanaged bite issues can also cause implants to loosen within the bone and break. Broken or loose implants must be surgically removed.

1. **Are there any post-treatment limitations once I have a Complete Denture with 2 or 4 Locator Attachments?**

To keep the tissue under the appliance healthy and to prolong the life of the locator attachments, your denture should be left out of your mouth during sleep. The teeth in the denture are not as strong as your natural teeth and you will not be able to chew as heavily on them. The appliance will tend to get food trapped underneath it and you may have to remove and clean it after eating.



Restores smile and function